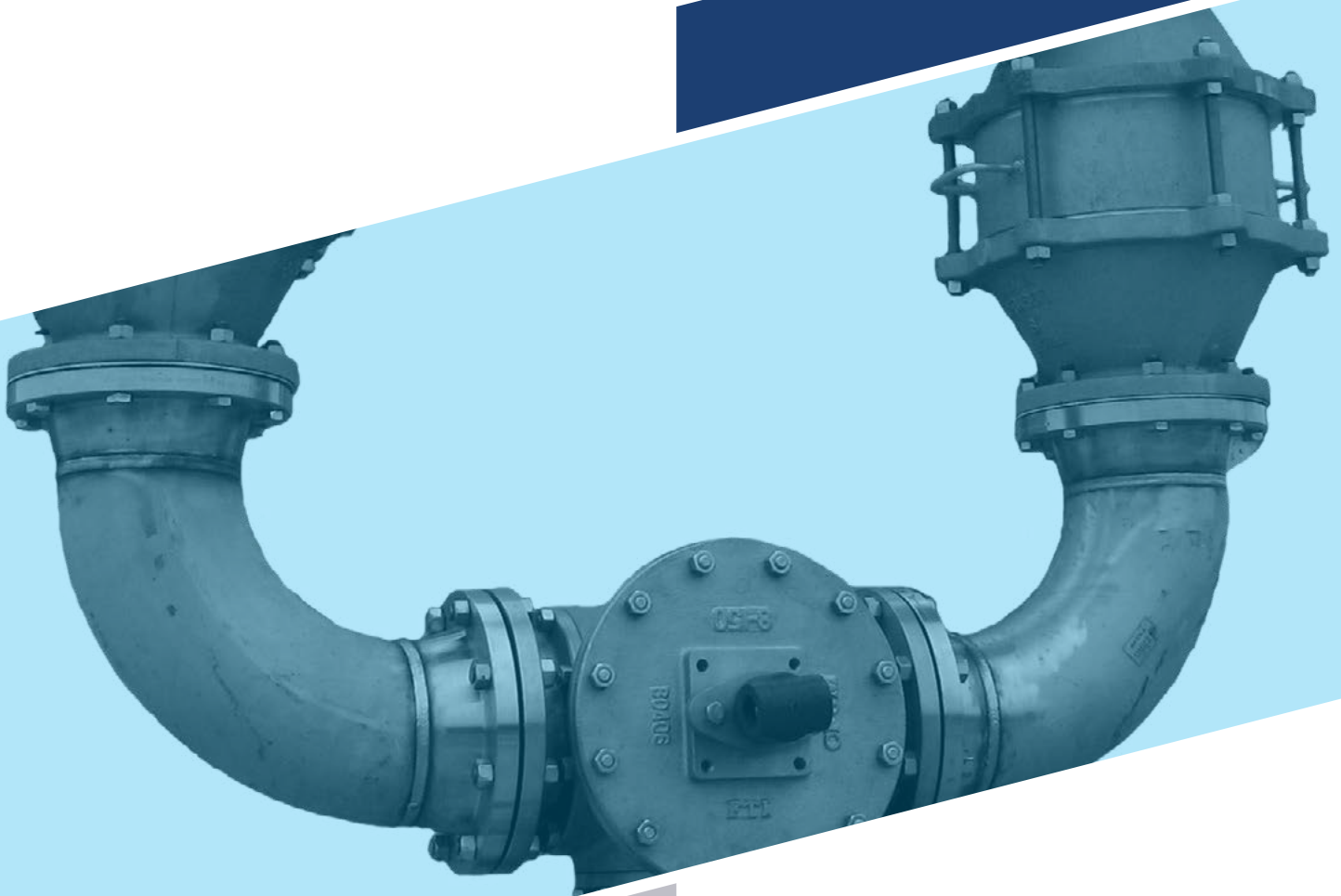




SAFETY DIVERTER VALVE

MODEL 8800SDV



MODEL 8800SDV

The Groth Model 8800 Safety Diverter Valve (SDV) is a 3-way, multi-port ball valve, offering a safe, quick and easy way for valve “changeover” used quite commonly on bio-digesters for ease of inspection, maintenance and cleaning. This allows for redundant pressure vacuum relief valve (PVRV) and flame arrester (FA) assemblies allowing no process interruption, while providing continuous system overpressure or vacuum protection due to pumping-in (influent) and pumping-out (effluent).

Technical Details

- Size: 2” (DN 50) through 12” (DN 250)
- Material: Carbon Steel and Stainless Steel

Features

- 3-way, multi-port, full bore design
- L Port (90 degrees)
- Live-loaded stem packing for positive sealing (sizes 6” and larger)
- High sphericity and mirror surface finish of ball ensures positive shut-off and low operating torque.
- Handlever (sizes 2” thru 4”), gear-operator (sizes 6” and larger)
- Visual indicator for indicating active relief valve and flow path of the media
- Lock-out mechanism (standard) prevents unwanted access
- Stopping mechanism prevents shutting off both valves at the same time
- Ability to perform maintenance without interrupting service or vessel protection
- Flow area is never restricted
- Balanced internal forces
- Smoother valve switching
- Able to apply pressure to any port

Options

- Threaded ports with manual valves allows pressure testing and field calibration

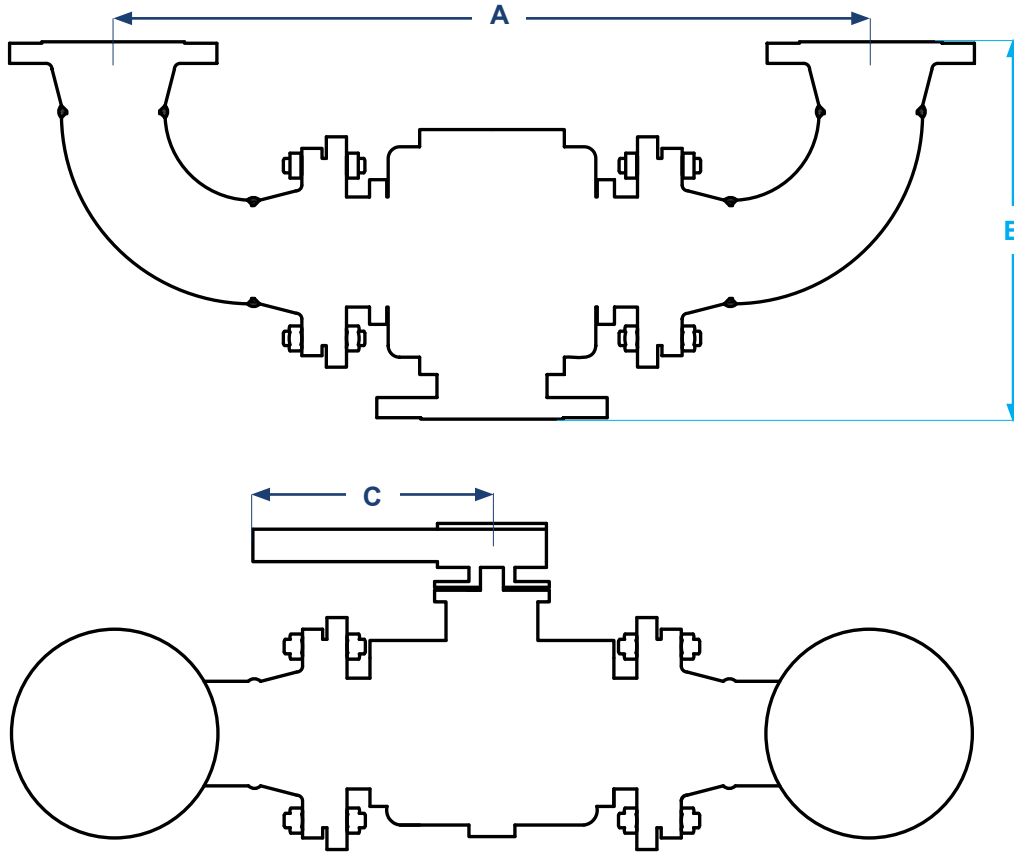


*Model 8392B only

SPECIFICATIONS

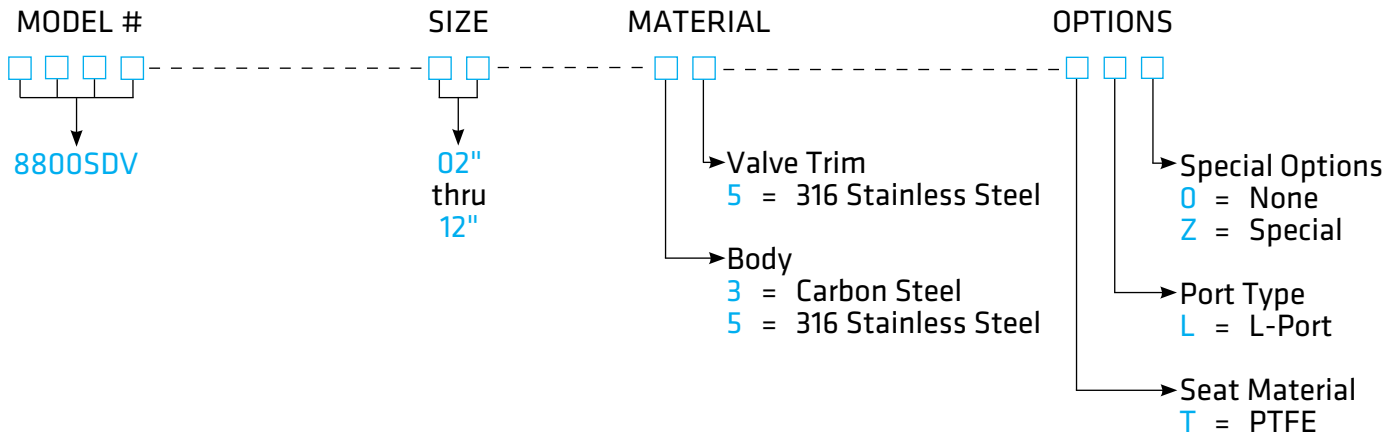
Size Inches (mm)	A Inches(mm)	B Inches (mm)	C Inches (mm)	Weight Stainless Steel Lb (kg)
2 (50)	20.5 (521)	10.3 (261)	15.75 (400)	67 (30)
3 (80)	27.3 (693)	13.7 (347)	17.72 (450)	131 (59)
4 (100)	32.3 (820)	16.1 (410)	19.68 (500)	183 (83)
6 (150)	42.3 (1074)	21.1 (537)	19.68 (500)	438 (199)
8 (200)	53.8 (1366)	26.9 (683)	ø 15.75 (400)	759 (344)
10 (250)	61.8 (1570)	30.9 (785)	ø 15.75 (400)	1155 (524)
12 (300)	72.4 (1840)	36.2 (920)	ø 23.62 (600)	1834 (832)

* ASME 150# class flange connection.
 ø -Wheel Handle Dimension



HOW TO ORDER

For easy ordering, select proper model numbers



NOTES

- Include model number when ordering.
- For special options, consult factory.

EXAMPLE 8 8 0 0 S D V — 0 2 — 5 5 — T L 0

Indicates 2" Model 8800SDV with 316 SS Valve Trim, 316 SS Body Material, PTFE, L-Port and no other options.



GROTHCORP.COM